

# WELCOME TO GARFIELD COUNTY'S OHV ROUTE SYSTEM

Garfield County is 5,270 square miles located in south central Utah and home to over 3,000 miles of the most scenic ATV/OHV routes in the world. Our red rock and slick rock formations, verdant forests, and spectacular deserts await your exploration.

Some of the routes on this map were established by early pioneers in their quest for fertile land to raise cattle, crops and their families. In later times, timber harvesting, mining exploration, and recreation were the economic drivers to gain access to the more remote areas.

As you explore and enjoy our county by ATV/OHV, you will be travelling through or to public lands managed by the Dixie National Forest, the Fishlake National Forest, the Bureau of Land Management, the National Park Service, and the Utah State Parks.

The Garfield County Commissioners and the Trails Committee invite you to use this map to explore the spectacular beauty and varied terrain of the mountains, plateaus, valleys, and canyons that make up our County's landscape. We promise you will love our good nature.

Please recreate responsibly, obey all ATV/OHV laws and regulations, wear appropriate safety equipment, and prepare yourself for current local conditions.

## RIDE ON DESIGNATED ROUTES

Revised August 2019  
and the Garfield County Trails Committee.  
Center the Dixie National Forest Reference  
the State of Utah Automated Geographic Reference  
funding from the State of Utah Parks & Recreation.  
The Garfield County ATV/OHV Route Map was  
made possible by the cooperative effort and  
support of the following agencies:



## OHV RIDING RESPONSIBILITIES

### 1. OFF-HIGHWAY VEHICLES, DEFINITIONS:

OHV's eligible to be used on Garfield County's Road System is defined by the Utah Off-Highway Vehicle Act, Title 41, Chapter 22, Utah Code Annotated. All terrain type and type II vehicles are allowed on Garfield County's Road System where size permits based on the trail.

### 2. COMPLIANCE WITH ALL TRAFFIC LAWS:

Any person operating an off-highway vehicle is subject to all of the provisions of Title 41, Chapter 6 Utah Code Annotated, as amended, (Traffic Code) which include but is not limited to:

- No person under 8 years of age will be allowed to operate an OHV on the Garfield County Road system.
- OHV Operators between the age of eight through fifteen must possess an OHV education certificate issued by the Utah Division of Parks and Recreation.
- All operators sixteen years and older must possess a valid driver's license or OHV education certificate.
- All riders under eighteen years of age must wear a properly fitting, safety regulated helmet.
- No person under fourteen years of age may operate on any County Class B Road as part of the system unless in the company of someone at least sixteen years of age with a valid drivers license or having an OHV Education Certificate in possession, and must be no further away from that person than communicating distance at any time.

### 3. OPERATIONS OF VEHICLE ON HIGHWAYS:

No person may operate an off-highway vehicle upon any street or highway not designated as open to off-highway vehicle use, except:

- When crossing a street or highway and the operator comes to a complete stop before crossing, proceeds only after yielding the right of way to oncoming traffic and crosses at a right angle.
- When loading or unloading any off-highway vehicle from a vehicle which shall be done with due regard for safety and at the nearest practical point of operation.
- When an emergency exists during any period of time and at those locations when operation of conventional motor vehicles is impractical or when the operation is directed by a peace officer or other public authority.

### 4. REGISTRATION:

The Utah Division of Motor Vehicles must license or register all vehicles operated on the Garfield County Road System. Out of state residents should purchase a non-resident off-highway vehicle permit from the Utah Division of Motor Vehicles.



### 5. VEHICLE EQUIPMENT REQUIREMENT:

An off-highway vehicle shall be equipped with:

- Brakes adequate to control the movement of and to stop and hold the vehicle under normal operating conditions.
- Headlights and taillights when operated between sunset and sunrise.
- A noise control device.
- Mufflers with an approved spark arrestor are required on all OHV's.

### 6. PROHIBITED USES:

- No person shall operate a OHV over twenty-five miles per hour (25mph) on the Garfield County Road system.
- All traffic and other safety laws and rules apply to operation of off-highway vehicles, including the prohibited use of said vehicles while under the influence of alcohol or drugs (UCA 41-6-44), and violations of such laws and regulations shall be subject to penalties under Utah State Law.
- No person may operate an off-highway vehicle in connection with acts of vandalism, harassment of wildlife or domestic animals, burglaries, other crimes, damage to the environment which includes excessive pollution of air, water, or land, abuse of the water right, impairment of plant or animal life, or excessive noise.
- No person shall operate or accompany a person operating an OHV upon privately owned land of any other person, firm, or corporation without permission from the owner or person in charge.
- It is unlawful for any person to tear down, mutilate, or destroy any sign, sign boards, or other notice including those which regulate trespassing for purposes of operating an OHV or to tear down, deface, or destroy any fence or other enclosure or any gate or bars belonging to such fence or enclosure.



# SAFETY CONSIDERATIONS

## BE PREPARED...

Plan ahead. The weather can change rapidly.

Carry all necessary supplies including an emergency repair kit, food, water, and warm clothing. Carry at least 1 gallon of water per person per day. Even on dry rides bring emergency gear for spending a night if necessary.



Develop a supply checklist to include the above items and other equipment such as area maps and guides, protective gear, flashlight, sunscreen, etc.

Know what to wear. Quality helmets, gloves, boots, goggles, and protective clothing will keep you comfortable and help prevent serious injuries.

Know your vehicle. Keep it in good condition and read the owner's manual.

Travel with other people.

Know before leaving what to do in an emergency. Cell phone service is not guaranteed.

## IMPORTANT USER INFORMATION

Every effort was made to ensure the accuracy of this map. The map complies with Garfield County's OHV Ordinance. In order to avoid any potential conflicts, please check with the local City, County, State, and Federal Land Management Agencies to verify compliance with regulations, ordinances, and current designations.

Travel at your own risk. The Routes on this map are graphical representations to be used for travel planning purposes only. Most of the routes on this map are roads of varying widths and surfaces including two tracks, native soil, gravel, or paved. Route conditions and designations are always subject to change. Please obtain current route information prior to travel.

The Garfield County OHV Route System provides riding opportunities into the world class landscapes of Southern Utah's canyons and plateaus. Routes are mapped for clarity and ease of use. However, since the routes traverse lands managed by different agencies, the rules vary from one location to another.

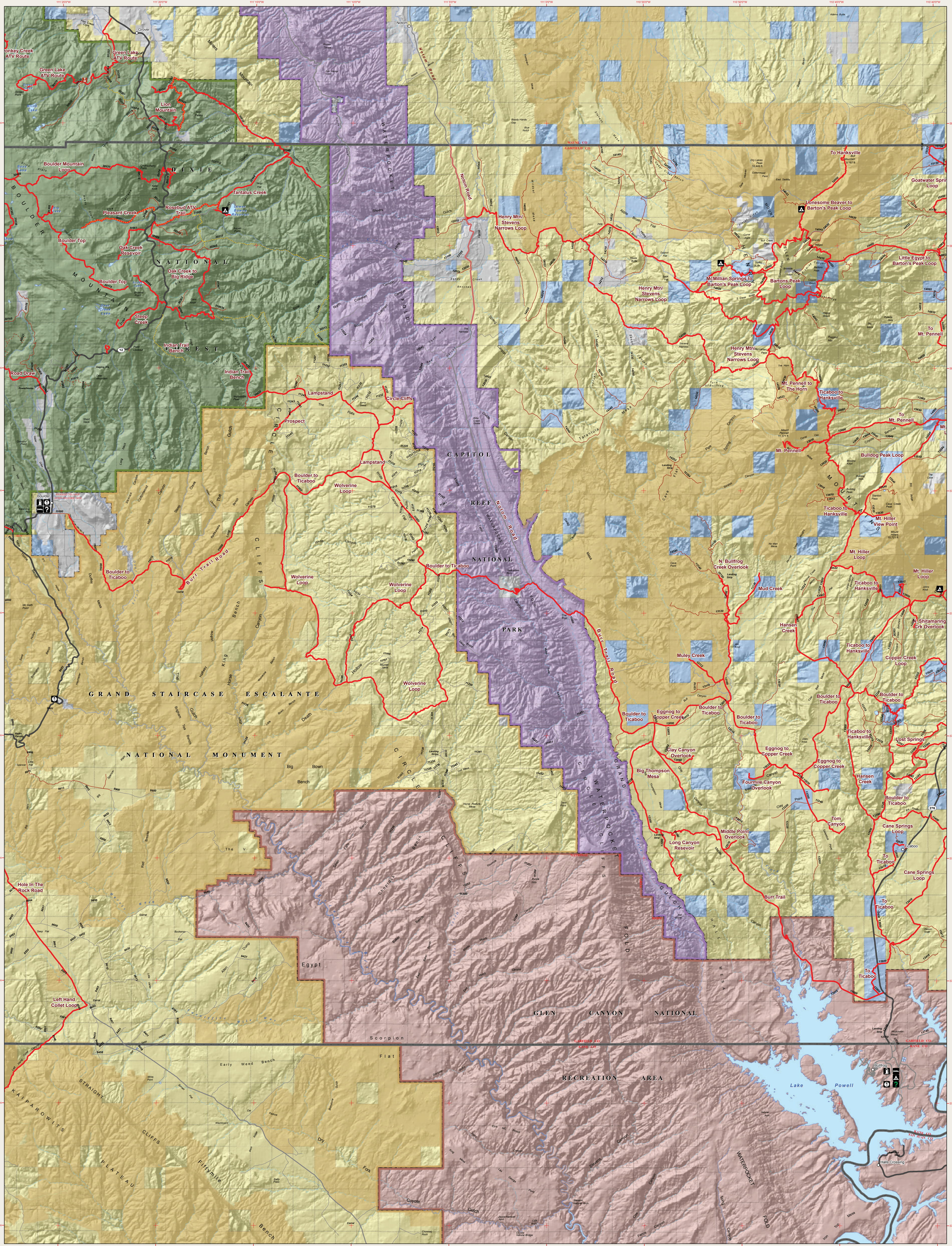
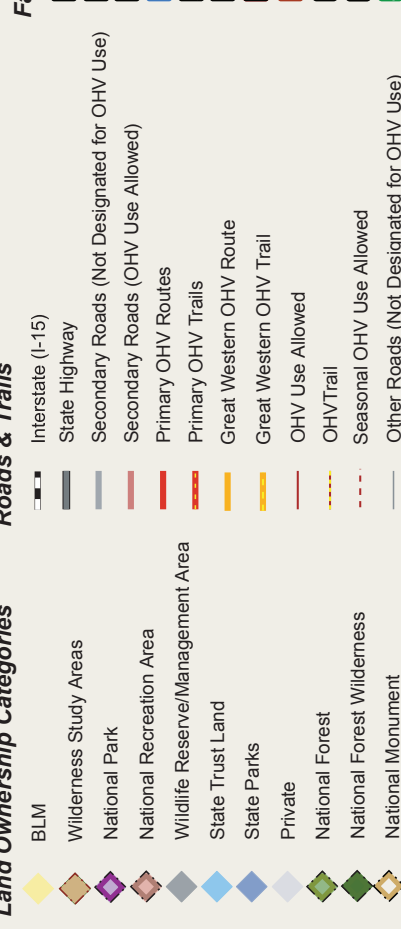
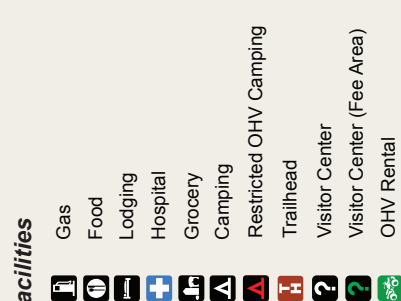
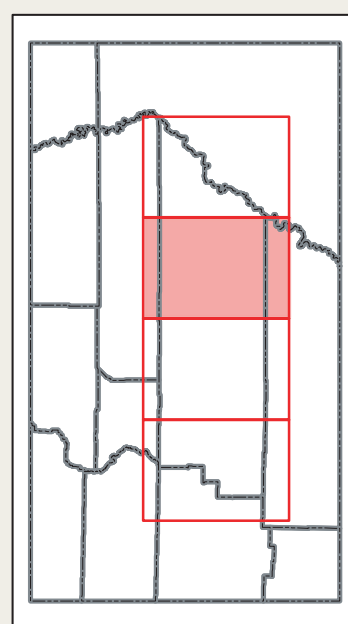
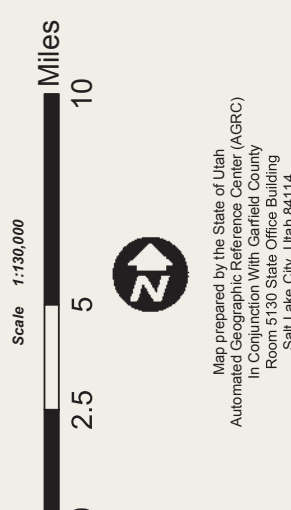
These routes will take you through or to public lands managed by the State of Utah, Dixie National Forest, Bureau of Land Management (BLM) Field Offices, Grand Staircase-Escalante National Monument, National Park Service, and Utah State Parks. Each agency has rules designed to protect public resources, which vary by agency and sometimes by season. Where routes go through towns, trailheads and designated OHV routes may be established to provide access to services. Please use only the designated routes in these towns.

Regulations can vary between agencies and between seasons including: campfire regulations, camping permits, group size limits, and designated campsites. Collection of natural objects (plant and animal material, rocks, fossils, petrified wood) requires a special permit on most of these lands. Some OHV routes are restricted to vehicles with 50 inch maximum width.

The Bureau of Land Management and the Forest Service are currently revising their Resource and Travel Management Plans. Once the revision process is complete, there may be changes to OHV area designations and routes. This could result in future changes to the information shown on this map. Each rider is responsible for knowing the rules that apply to the lands they are using. It is important to be informed before riding. You can get information on regulations from agency websites (listed on this map), agency brochures and publications, or at the visitor centers shown on this map.

Each of us must ride responsibly on all public and private lands.

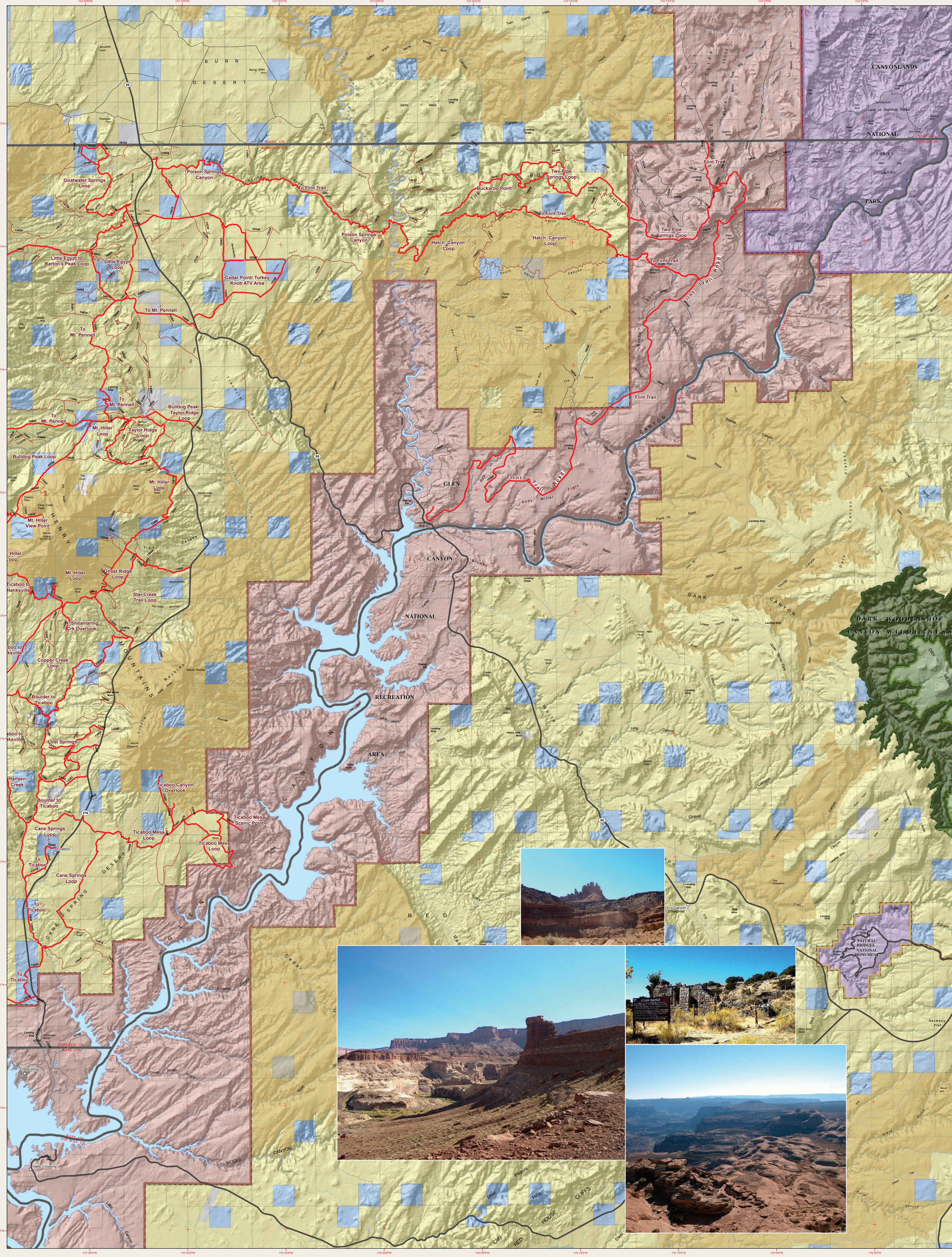
# REGION 3



# GARFIELD COUNTY ATV & OHV ROUTE MAP



## NOT FOR SALE Regions 3 & 4



# REGION 4

## GARFIELD COUNTY ATV/OHV ROUTES SIGNING

**JUNCTION DIRECTIONAL MARKERS**  
Outside the trail boundary

A 4x4 wood post located at junctions indicates route on the Garfield County OHV Route Map, allowed use, direction, and route name.

**REASSURANCE MARKERS**  
Outside the trail boundary

A fiberglass marker located at junctions indicates route on the Garfield County OHV Route Map, allowed use, direction, and route name.

## COUNTY ROAD NUMBERS

**GARFIELD COUNTY ROAD NUMBER MARKER**

On brown fiberglass marker located at road junctions, indicates road is on Garfield County Road System.

**KANE COUNTY ROAD NUMBER MARKER**

On brown fiberglass marker located at road junctions, indicates road is on Kane County Road System.

**FOREST ROAD NUMBER MARKER**

A fiberglass marker or wooden sign usually at a road junction with no direction arrow. These three or four-digit numbers indicate a road open to motorized travel.

**NATIONAL FOREST ROUTE MARKERS**

Roads maintained for LOW clearance vehicles, such as sedans, trailers and motorhomes.  
Roads suitable for HIGH clearance vehicles only.

**JUNCTION POST**  
Inside the trail boundary

A 4x4 wood post located at the trail junction indicates the trail number and directional arrow. These are one or two-digit numbers.

**REASSURANCE MARKER**  
Inside the trail boundary

A fiberglass marker with a color-coded directional arrow and one or two-digit trail number indicates the continuing direction of the trail.

**CLOSURE MARKER**

A fiberglass marker in the middle of the trail indicates a closure for soil, wildlife and resource protection.

**OTHER SIGNS & MARKERS**

Symbol with RED SLASH indicates activity not allowed. Symbol with YELLOW SLASH indicates activity not recommended.



## HIGHWAY MILEAGE CHART

• Mileage approximated

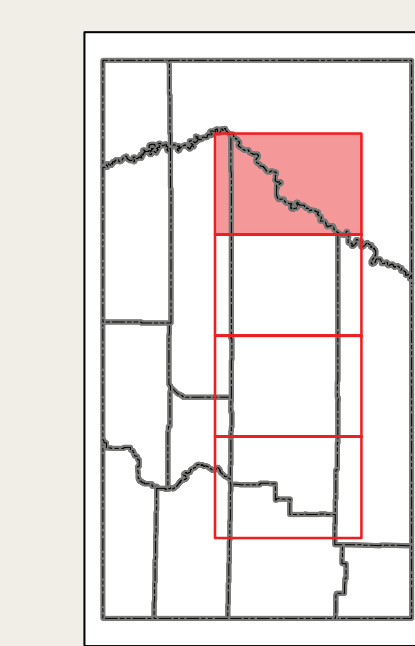
COMMUNITIES WITHIN GARFIELD COUNTY								
	Antimony	Boulder	Cannonville	Escalante	Hatch	Panguitch	Ticaboo	Tropic
Antimony	0	78	49	51	63	48	145	44
Boulder	78	0	78	27	95	94	74	66
Cannonville	49	61	0	35	34	33	134	5
Escalante	51	27	35	0	69	66	100	40
Hatch	63	95	34	69	0	15	168	29
Panguitch	48	94	33	66	15	0	167	28
Ticaboo	145	74	134	100	168	167	0	139
Tropic	44	66	5	40	29	28	139	0

OTHER CITIES OUTSIDE OF GARFIELD COUNTY							
	Bull Frog, Utah	Cedar City, Utah	Hanksville, Utah	Kanab, Utah	Richfield, Utah	St. George, Utah	Salt Lake City, Utah
Antimony	131	72	133	99	167	165	137
Boulder	114	160	99	132	81	66	233
Cannonville	91	83	145	111	145	140	54
Escalante	116	147	86	121	52	68	220
Hatch	63	100	111	99	93	78	165
Panguitch	166	212	151	184	133	120	285
Ticaboo	221	246	279	274	261	246	375

OTHER CITIES OUTSIDE OF UTAH							
	Denver, Colorado	Las Vegas, Nevada	Page, Arizona	Phoenix, Arizona			
Antimony	490	285	189	462			
Boulder	483	331	220	493			
Cannonville	545	270	159	432			
Escalante	510	303	194	467			
Hatch	558	252	125	398			
Panguitch	543	237	140	414			
Ticaboo	532	404	293	444			
Tropic	549	265	154	427			



**Land Ownership Categories**

- BLM
- Wilderness
- National Park
- National Recreation Area
- Wildlife Resource Management Area
- State Trust Land
- State Parks
- Private
- National Forest
- National Monument

**Facilities**

- Gas
- Shower/Permit
- Stream/River Intermittent
- Canal
- Hotel
- Logging
- Hospital
- Grocery
- Camping
- Great Western ATV Route
- Trail
- Visitor Center
- Visitor Center (Fee Area)
- ATV Rental
- ATV Use Allowed

**Watersheds**

- Shower/Permit
- Stream/River Intermittent
- Canal
- Cities & Towns
- Sections = 1 Mile
- Latitude / Longitude Gridline

**Roads & Trails**

- State Highway
- Secondary Roads (ATV Use NOT Allowed)
- Secondary Roads (ATV Use Allowed)
- Promoted ATV Routes
- Promoted ATV Trails
- Great Western ATV Route
- ATV Use Allowed
- ATV Trail
- Other Roads

For Information Regarding ATV/OHV Routes & Accommodations in Garfield County contact:

**FISHLAKE NATIONAL FOREST RANGER DISTRICTS**  
www.fs.fed.us/r4/fishlake

**GARFIELD COUNTY TRAVEL COUNCIL**  
www.garfieldcountytravelcouncil.com  
1-800-444-6689 or (435) 676-1160  
55 South Main Street  
Panguitch, Utah 84759

**DIXIE NATIONAL FOREST RANGER DISTRICTS**  
www.fs.fed.us/r4/dixie

**NATIONAL PARK SERVICE**  
www.nps.gov

**BUREAU OF LAND MANAGEMENT**  
www.blm.gov

**KANAB VISITOR CENTER**  
115 E. 900 N.  
Richfield, Utah 84701  
(435) 896-9233

**FREMONT RIVER RANGER DISTRICT**  
P.O. Box 129  
138 South Main Street  
Loa, Utah 84747  
(435) 836-2800

**ESCALANTE FIELD STATION**  
755 South Main Street  
Escalante, Utah 84726  
Phone: (435) 826-5600  
Fax: (435) 826-5650  
Mail: UT-Escalante@blm.gov

**KANAB VISITOR CENTER**  
745 East Highway 89  
Kanab, Utah 84741  
(435) 644-1300

**RICHFIELD FIELD OFFICE**  
150 E. 900 N.  
Richfield, Utah 84701  
(435) 896-1500

**HENRY MOUNTAIN FIELD STATION**  
380 S. 1100 W.  
Hanksville, Utah 84734  
(435) 542-3461

**POWELL RANGER DISTRICT**  
225 East Center St.  
P.O. Box 80  
Panguitch, Utah 84759  
(435) 676-9300

**ESCALANTE RANGER DISTRICT**  
755 West Main Street  
P.O. Box 246  
Escalante, Utah 84726  
(435) 826-5499

**GRAND STAIRCASE ESCALANTE NATIONAL MONUMENT**  
www.utah.blm.gov/monument

**CANNONVILLE VISITOR CENTER**  
10 Center Street  
P.O. Box 18061  
Cannonville, Utah 84718  
(Open Seasonally March - November)  
Phone: (435) 826-5640  
Fax: (435) 679-8983

**ESCALANTE FIELD STATION**  
755 South Main Street  
Escalante, Utah 84726  
Phone: (435) 826-5600  
Fax: (435) 826-5650  
Mail: UT-Escalante@blm.gov

**KANAB VISITOR CENTER**  
745 East Highway 89  
Kanab, Utah 84741  
(435) 644-1300

**BOULDER CONTACT STATION / ANASAZI STATE PARK MUSEUM**  
P.O. Box 1429  
Boulder, Utah 84716  
(Open Seasonally April - November)  
(435) 855-7382

**GLEN CANYON NATIONAL RECREATION AREA**  
www.nps.gov/glca/

**GLEN CANYON NRA**  
P.O. Box 1507  
Tropic, Utah 84775  
Phone: (928) 608-6200  
Fax: (928) 608-6259

**BULLFROG VISITOR CENTER**  
Highway 276 north of Bullfrog Marina  
www.stateparks.utah.gov/bfv

**UTAH STATE PARKS**  
www.stateparks.utah.gov

**UTAH OHV SAFETY & EDUCATION**  
www.stateparks.utah.gov/ohv

**IN CASE OF EMERGENCY CALL 911**  
Garfield County Sheriff (435) 676-2678

